

# -4%

## DECREASE IN OVERALL HOMELESSNESS 2017-2019

### 4,015

PEOPLE EXPERIENCED HOMELESSNESS ON ANY GIVEN NIGHT

### 50%

WERE SHELTERED



### 50%

WERE UNSHELTERED



### 44%

WERE CHRONICALLY HOMELESS



### IN MULTNOMAH COUNTY

HOMELESSNESS **DISPROPORTIONATELY IMPACTS** PEOPLE OF COLOR:

PEOPLE OF COLOR REPRESENT

## 29.5%

OF THE TOTAL POPULATION

PEOPLE OF COLOR REPRESENT

## 38.1%

OF THE HOMELESS POPULATION

HOMELESSNESS IS **ON THE RISE** AMONG THESE GROUPS:

PEOPLE OVER AGE 70

CHRONICALLY HOMELESS

PEOPLE WITH DISABILITIES

## +14%

## +37%

## +75%

### HOW WE COMPARE

TO OTHER WEST COAST CITIES...

## 2017 VS. 2019:

**SEATTLE - 3% DECREASE,**

NOW WITH A TOTAL OF 11,199 PEOPLE

**PORTLAND - 4% DECREASE,**

NOW WITH A TOTAL OF 4,015 PEOPLE

**OAKLAND - 47% INCREASE,**

NOW WITH A TOTAL OF 8,022 PEOPLE

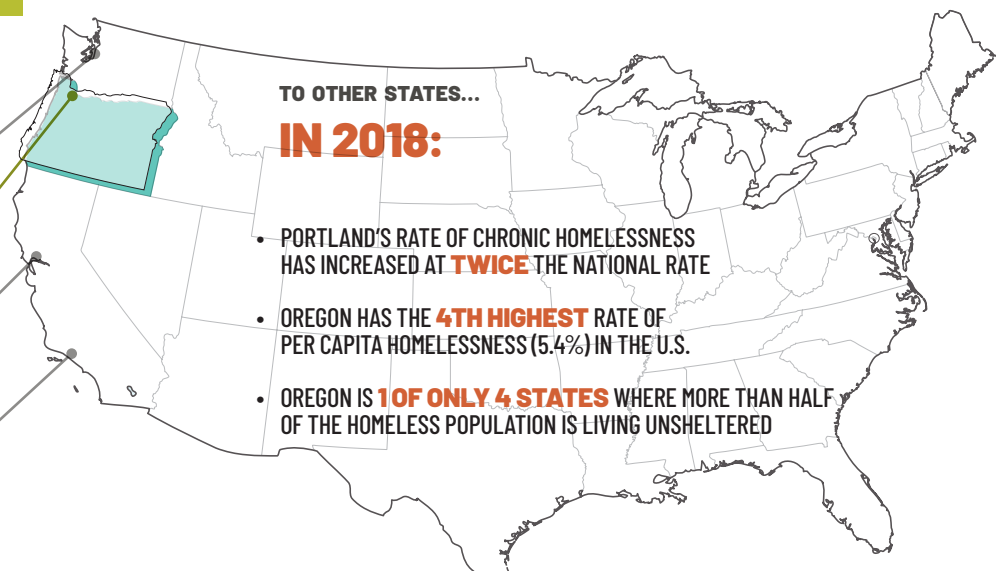
**LOS ANGELES - 2% INCREASE,**

NOW WITH A TOTAL OF 58,936 PEOPLE

TO OTHER STATES...

## IN 2018:

- PORTLAND'S RATE OF CHRONIC HOMELESSNESS HAS INCREASED AT **TWICE** THE NATIONAL RATE
- OREGON HAS THE **4TH HIGHEST** RATE OF PER CAPITA HOMELESSNESS (5.4%) IN THE U.S.
- OREGON IS **1 OF ONLY 4 STATES** WHERE MORE THAN HALF OF THE HOMELESS POPULATION IS LIVING UNSHELTERED



# WHAT WE NEED TO END HOMELESSNESS

## MORE RENTAL ASSISTANCE



**ROBUST FUNDING IS NEEDED TO SUPPORT HOUSING STABILITY FOR VERY LOW INCOME HOUSEHOLDS**



THE PERCENTAGE OF FEDERAL DISCRETIONARY BUDGET GOING TO THE DEPARTMENT OF HOUSING AND URBAN DEVELOPMENT HAS **DECREASED FROM 14.8%** OF THE BUDGET IN 1978 **TO JUST 2.7%** OF THE BUDGET IN 2018.

## MORE SUPPORTIVE SERVICES



**AS PEOPLE BECOME INCREASINGLY VULNERABLE, THEY WILL REQUIRE DEEPER LEVELS OF SUPPORT TO END THEIR HOMELESSNESS AND STAY HOUSED**



BETWEEN 2017 AND 2019, **50% MORE PEOPLE ACCESSED HOMELESS SERVICES IN MULTNOMAH COUNTY**, HELPING US ACHIEVE A 4% REDUCTION IN HOMELESSNESS.

## MORE AFFORDABLE HOUSING



**LIVING IN PORTLAND IS CURRENTLY UNAFFORDABLE ON A FULL-TIME, MINIMUM WAGE SALARY**



**HALF** OF PORTLAND RENTERS SPEND AT **LEAST A THIRD** OF THEIR INCOME ON RENT, LEAVING THEM AT GREATER RISK OF HOMELESSNESS.

## GET INVOLVED AT TPROJECTS.ORG

VOLUNTEER



DONATE



ADVOCATE



## TO LEARN MORE

VISIT [TPROJECTS.ORG/SNAPSHOT](https://tprojects.org/snapshot)  
OR LIKE US ON SOCIAL MEDIA @TRANSITIONPROJECTS